



Econlockhatchee Trail Final Engineering Design

From South of Lake Underhill Road to South of Colonial Drive (SR 50)

Orange County Mayor
Richard T. Crotty

Issue 1 - August 2008

District 3 Commissioner
Mildred Fernandez

Introduction

In February 2005, the Orange County Board of County Commissioners approved the recommendations of the RCA Study for the Econlockhatchee Trail Roadway Improvement Project.

Roadway Improvements

The roadway improvements consist of widening Econlockhatchee Trail from two to four lanes from south of Lake Underhill Road to south of Colonial Drive (SR 50). This project will tie into the Colonial Drive improvements being designed and constructed by the Florida Department of Transportation (FDOT). Intersection improvements at Lake Underhill Road, Valencia College Lane and Millinockett Lane are also included in this project as well as improvements to approximately 2,270-feet of Lake Underhill Road and 750-feet of Valencia College Lane. The proposed roadway will consist of 12-foot travel lanes, a raised median, 5-foot sidewalks, 4-foot bicycle lanes, curb and gutter drainage, street lighting and landscaping. The bridge over SR 408 will be widened to accommodate the new construction. This project has been split in two sections, south and north, as shown in the location map above.



Work has begun on the next phase of the project, which includes the final engineering design, as well as the preparation of the construction plans and the right-of-way acquisition documents. This phase will take approximately 18 months to complete. Once the final design of the widening is complete the project will move into the right-of-way acquisition phase and ultimately to construction.

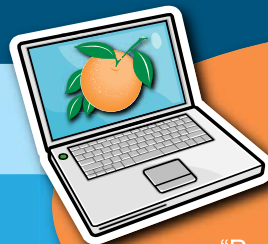
Final Design Underway

Work has begun on the next phase of the project, which includes the final engineering design, as well as the preparation of the construction plans and the right-of-way acquisition documents. This phase will take approximately 18 months to complete. Once the final design of the widening is complete the project will move into the right-of-way acquisition phase and ultimately to construction.

If you have any questions or need more information, Please contact:

Para más información, o si quiere hacer comentarios o preguntas, llame a:

Mr. Roberto Ng, P.E.
Orange County Public Works
4200 S. John Young Parkway
Orlando, FL 32839
Telephone: (407) 836-8067
Email: roberto.ng@ocfl.net



Stay Informed!

Go to www.orangecountyfl.net and choose **Transportation Planning** from the "Select Quick Link" drop down menu. Scroll down to "Programs & Information" and click on **Projects Under Design** then click on **Econlockhatchee Trail**

Orange County Public Works
 Engineering (5024)
 4200 South John Young Parkway
 Orlando, Florida 32839-9205
 Address Service Requested



Orange County
 Mayor
 Richard T. Crotty

ECONLOCKHATCHEE TRAIL FINAL ENGINEERING DESIGN

District 3
 Commissioner
 Mildred Fernandez

